

Cite as: J. Mateus *et al.*, *Science*  
10.1126/science.abd3871 (2020).

# Selective and cross-reactive SARS-CoV-2 T cell epitopes in unexposed humans

Jose Mateus<sup>1</sup>, Alba Grifoni<sup>1</sup>, Alison Tarke<sup>1</sup>, John Sidney<sup>1</sup>, Sydney I. Ramirez<sup>1,3</sup>, Jennifer M. Dan<sup>1,3</sup>, Zoe C. Burger<sup>3</sup>, Stephen A. Rawlings<sup>3</sup>, Davey M. Smith<sup>3</sup>, Elizabeth Phillips<sup>2</sup>, Simon Malla<sup>2</sup>, Marshall Lammers<sup>1</sup>, Paul Rubiro<sup>1</sup>, Lorenzo Quiambao<sup>1</sup>, Aaron Sutherland<sup>1</sup>, Esther Dawen Yu<sup>1</sup>, Ricardo da Silva Antunes<sup>1</sup>, Jason Greenbaum<sup>1</sup>, April Frazier<sup>1</sup>, Alena J. Markmann<sup>4</sup>, Lakshmanane Premkumar<sup>5</sup>, Aravinda de Silva<sup>5</sup>, Bjoern Peters<sup>1,3</sup>, Shane Crotty<sup>1,3</sup>, Alessandro Sette<sup>1,3\*†</sup>, Daniela Weiskopf<sup>1\*†</sup>

<sup>1</sup>Center for Infectious Disease and Vaccine Research, La Jolla Institute for Immunology, La Jolla, CA 92037, USA. <sup>2</sup>Institute for Immunology and Infectious Diseases, Murdoch University, Perth, WA 6150, Australia. <sup>3</sup>Department of Medicine, Division of Infectious Diseases and Global Public Health, University of California, San Diego, La Jolla, CA 92037, USA. <sup>4</sup>Department of Medicine, Division of Infectious Diseases, University of North Carolina School of Medicine, Chapel Hill, NC 27599, USA. <sup>5</sup>Department of Microbiology and Immunology, University of North Carolina School of Medicine, Chapel Hill, NC 27599, USA.

\*Corresponding author. Email: alex@lji.org (A.S.); daniela@lji.org (D.W.)

†These authors contributed equally to this work.

**Many unknowns exist about human immune responses to the SARS-CoV-2 virus. SARS-CoV-2 reactive CD4<sup>+</sup> T cells have been reported in unexposed individuals, suggesting pre-existing cross-reactive T cell memory in 20-50% of people. However, the source of those T cells has been speculative. Using human blood samples derived before the SARS-CoV-2 virus was discovered in 2019, we mapped 142 T cell epitopes across the SARS-CoV-2 genome to facilitate precise interrogation of the SARS-CoV-2-specific CD4<sup>+</sup> T cell repertoire. We demonstrate a range of pre-existing memory CD4<sup>+</sup> T cells that are cross-reactive with comparable affinity to SARS-CoV-2 and the common cold coronaviruses HCoV-OC43, HCoV-229E, HCoV-NL63, or HCoV-HKU1. Thus, variegated T cell memory to coronaviruses that cause the common cold may underlie at least some of the extensive heterogeneity observed in COVID-19 disease.**

The emergence of SARS-CoV-2 in late 2019 and its subsequent global spread has led to millions of infections and substantial morbidity and mortality (1). Coronavirus disease 2019 (COVID-19), the clinical disease caused by SARS-CoV-2 infection, can range from mild self-limiting disease to acute respiratory distress syndrome and death (2). The mechanisms underlying the spectrum of COVID-19 disease severity states, and the nature of protective immunity against COVID-19 currently remains unclear.

Studies dissecting the human immune response against SARS-CoV-2 have begun to characterize SARS-CoV-2 antigen-specific T cell responses (3–8), and multiple studies have described marked activation of T cell subsets in acute COVID-19 patients (9–13). Surprisingly, antigen-specific T cell studies performed with five different cohorts reported that 20-50% of people who had not been exposed to SARS-CoV-2 had significant T cell reactivity directed against peptides corresponding to SARS-CoV-2 sequences (3–7). The studies were from geographically diverse cohorts (USA, Netherlands, Germany, Singapore, and UK), and the general pattern observed was that the T cell reactivity found in unexposed individuals was predominantly mediated by CD4<sup>+</sup> T cells. It was speculated that this phenomenon might be due to preexisting memory responses against human “common cold”

coronaviruses (HCoVs), such as HCoV-OC43, HCoV-HKU1, HCoV-NL63, or HCoV-229E. These HCoVs share partial sequence homology with SARS-CoV-2, are widely circulating in the general population, and are typically responsible for mild respiratory symptoms (14–16). However, the hypothesis of crossreactive immunity between SARS-CoV-2 and common cold HCoVs still awaits experimental trials. This potential preexisting cross-reactive T cell immunity to SARS-CoV-2 has broad implications, as it could explain aspects of differential COVID-19 clinical outcomes, influence epidemiological models of herd immunity (17, 18), or affect the performance of COVID-19 candidate vaccines.

## Epitope repertoire in SARS-CoV-2 unexposed individuals

To define the repertoire of CD4<sup>+</sup> T cells recognizing SARS-CoV-2 epitopes in previously unexposed individuals, we used in vitro stimulation of PBMCs for 2-weeks with pools of 15-mer peptides. This method is known to be robust for detecting low frequency T cell responses to allergens, bacterial, or viral antigens (19, 20), including naive T cells (21). For screening SARS-CoV-2 epitopes, we utilized PBMC samples from unexposed subjects collected between March 2015 and March 2018, well before the global circulation of SARS-CoV-2

occurred. The unexposed subjects were confirmed seronegative for SARS-CoV-2 (fig. S1A).

SARS-CoV-2 reactive T cells were expanded with one pool of peptides spanning the entire sequence of the spike protein (CD4-S), or a non-spike “megapool” (CD4-R) of predicted epitopes from the non-spike regions (i.e., “remainder”) of the viral genome (4). In total, 474 15-mer SARS-CoV-2 peptides were screened. After 14 days of stimulation, T cell reactivity against intermediate “mesopools,” each encompassing approximately 10 peptides, were assayed using a FluoroSPOT assay (e.g., 22 CD4-R mesopools; fig. S2A). Positive mesopools were further deconvoluted to identify specific individual SARS-CoV-2 epitopes. Representative results from one donor show the deconvolution of mesopools P6 and P18 to identify seven different SARS-CoV-2 epitopes (fig. S2B). Intracellular cytokine staining assays (ICS) specific for IFN- $\gamma$  determined whether antigen specific T cells responding to the SARS-CoV-2 mesopools were CD4<sup>+</sup> or CD8<sup>+</sup> T cells (fig. S2C). Results from the 44 donors/CD4-R mesopool and 40 donors/CD4-S mesopool combinations yielding a positive response are shown in fig. S2, D and E, respectively. In 82/88 cases (93.2%) the cells responding to SARS-CoV-2 mesopool stimulation were clearly CD4<sup>+</sup> T cells, as judged by the ratio of CD4/CD8 responding cells. In four cases (4.5%), the responding cells were CD8<sup>+</sup> T cells, and in two cases (2.3%) the responses were mediated by both CD4<sup>+</sup> and CD8<sup>+</sup> T cells. The fact that CD8<sup>+</sup> T cells were rarely detected was not surprising, since the peptides used in CD4-R encompassed predicted class II epitopes, and the CD4-S is constituted of 15-mer peptides (9-10-mer peptides are optimal for CD8<sup>+</sup> T cells). Furthermore, the 2-week restimulation protocol was originally designed to expand CD4<sup>+</sup> T cells (20). Overall, these results indicated that the peptide screening strategy utilized mapped SARS-CoV-2 epitopes recognized by CD4<sup>+</sup> T cells in unexposed individuals.

A total of 142 SARS-CoV-2 epitopes were identified, 66 from the spike protein (CD4-S) and 76 from the remainder of the genome (CD4-R) (table S1). For each combination of epitope and responding donor, potential HLA restrictions were inferred based on the predicted HLA binding capacity of the particular epitope for the specific HLA alleles present in the responding donor (22). Each donor recognized an average of 11.4 epitopes (range 1 to 33, median 6.5; fig. S3A). Forty of the 142 epitopes were recognized by 2 or more donors (fig. S3B), accounting for 55% of the total response (fig. S3C). These 142 mapped SARS-CoV-2 epitopes may prove useful in future studies as reagents for tracking CD4<sup>+</sup> T cells in SARS-CoV-2 infected individuals, and in COVID-19 vaccine trials.

### Epitope distribution by ORF of origin

While a broad range of different SARS-CoV-2 antigens were recognized, it was striking that several of the epitopes

yielding the most frequent (i.e., recognized in multiple donors) or most vigorous (i.e., most SFC/10<sup>6</sup> cells) responses were derived from the SARS-CoV-2 spike antigen (table S1). We therefore assessed the overall distribution of the 142 T cell epitopes mapped among all SARS-CoV-2 proteins, compared to the relative size of each SARS-CoV-2 antigen (Fig. 1, A and B). Notably, 54% of the total positive response was associated with spike-derived epitopes (Fig. 1A; 11% for RBD, and 44% for the non-RBD portion of spike). Of relevance for COVID-19 vaccine development, only 20% of the spike responses were derived from the receptor-binding domain (RBD) region (Fig. 1A; comparing 11% vs 44%, as described above), and the RBD region accounted for only 11% of the overall CD4<sup>+</sup> T cell reactivity (Fig. 1A). Mapped epitopes were fairly evenly distributed across the SARS-CoV-2 genome in proportion to the size of each protein (Fig. 1B;  $p=0.038$ ,  $r=0.42$ ). In addition to the strong responses directed to spike, responses were also seen for ORF6, ORF3a, N, ORF8 and within Orf1a/b, where nsp3, nsp12, nsp4, nsp6, nsp2 and nsp14 were more prominently recognized. These mapped epitope results at the ORF level partially overlap with the ORFs targeted by CD4<sup>+</sup> T cells in COVID-19 cases (4). Notably, no epitopes derived from the membrane protein (M) were identified in unexposed individuals (Fig. 1B), but M is robustly recognized by SARS-CoV-2-specific CD4<sup>+</sup> T cell responses in COVID-19 cases (4). The lack of quality class II epitopes in M was unsurprising, based on M molecular biology; M is a small protein with three transmembrane domains. Combined, the data indicate that class II epitopes are relatively broadly available across the SARS-CoV-2 genome, but that SARS-CoV-2 memory CD4<sup>+</sup> T cells preferentially target proteins highly expressed during infection, exemplified by M and S (spike) epitope mapping results.

### Sequence homology of the identified SARS-CoV-2 epitopes to other common HCoVs

When this epitope mapping study was initiated, an assumption was that the in vitro T cell culture epitope mapping would reveal an epitope repertoire associated with de novo generation of responses from naïve T cells. However, while these epitope mapping studies were in progress, we and others detected significant ex vivo reactivity against bulk pools of SARS-CoV-2 peptides (3–7). We speculated that this might reflect the presence of memory T cells cross-reactive between common cold human coronaviruses (HCoVs) and SARS-CoV-2. These other HCoVs circulate widely in human populations and are typically responsible for mild, usually undiagnosed, respiratory illnesses, such as the common cold (14–16). However, there is currently a lack of experimental data addressing whether memory CD4<sup>+</sup> T cells, cross-reactive between SARS-CoV-2 and other HCoVs, do indeed exist.

We therefore next determined the degree of homology for

all four widely circulating HCoVs for all 142 SARS-CoV-2 epitopes identified herein. For the analysis, we split the peptides into three groups based on immunogenicity: 1) never immunogenic, 2) immunogenic in one individual, or 3) immunogenic in two or more individuals (Fig. 1C). There was significantly higher sequence similarity in peptides recognized by more than one individual compared to peptides recognized by a single individual or not at all ( $p < 0.0001$ , two-tailed Mann-Whitney test). Additionally, almost all donors from the unexposed cohort used for the epitope screen were seropositive for three widely circulating common cold coronaviruses HCoVs (HCoV-NL63, HCoV-OC42, HCoV-HKU1) (fig. S1B). Thus, epitope homology and seropositivity data suggest that T cell cross-reactivity was plausible between SARS-CoV-2 and HCoVs already established in the human population.

To select epitope subsets to be analyzed in more detail, we plotted the T cell response magnitude of each positive epitope per donor (Fig. 1D). This analysis confirms the dominance of the spike antigen over the epitopes derived from the remainder of the genome ( $p < 0.001$ , two-tailed Mann-Whitney test).

Next, we selected two categories of SARS-CoV-2 epitopes of interest. The first category was epitopes with potential cross-reactivity from HCoVs. We initially selected the 67% arbitrary cut off, since we reasoned that a 9mer is the epitope region involved in binding to class II (23), and that often one or two residues in addition to the 9-mer core region are required for optimal recognition (24) (Fig. 1D, red). Second, we independently filtered for any epitopes associated with high responses (top ~30%; Fig. 1D, blue). This resulted in selection of 31 epitopes from spike (6 with high homology, and 25 for dominant responses), organized in a new CD4-[S31] pool. Similarly, we generated a new CD4-[R30] pool, composed of 30 epitopes from the remainder of the genome (9 with high homology and 21 associated with strong responses; Fig. 1D). These epitope pools were then used for further CD4<sup>+</sup> T cell studies.

### Direct evidence of reactivity to HCoV epitopes homologous to SARS-CoV-2 epitopes

To directly address whether reactivity against SARS-CoV-2 in unexposed donors could be ascribed to cross-reactivity against other HCoVs, we designed a peptide pool encompassing peptides homologous to CD4-R30 epitopes, derived from HCoV-229E, HCoV-NL63, HCoV-OC43, HCoV-HKU1 and several other HCoVs (see Methods), for a total of 129 HCoV homologs (HCoV-R129; table S2). Similarly, we synthesized a pool that encompassed peptides homologous to the SARS-CoV-2 CD4-S31 epitope pool, consisting of potential epitopes derived from other HCoVs, for a total of 124 HCoV homologs (HCoV-S124; table S3).

Next, we utilized an activation induced marker assay

(AIM assay, (25–27)) to detect virus-specific T cells in a new set of unexposed donors, not used for the epitope identification studies (Fig. 2A and table S4), and a set of convalescent COVID-19 patients (table S5). We detected significant ex vivo CD4<sup>+</sup> T cell responses against the SARS-CoV-2 non-spike (CD4-R) and spike (CD4-S) peptides compared to the negative control (DMSO) (Fig. 2, B and C;  $p < 0.0001$  and  $p < 0.0001$  respectively, two-tailed Mann-Whitney). These responses were increased in COVID-19 cases compared to unexposed subjects (Fig. 2D;  $p = 0.0015$  and  $p = 0.0022$ , respectively, two-tailed Mann-Whitney), as previously reported (4). In the unexposed subjects, significant frequencies of CD4<sup>+</sup> T cells were detected against the CD4-R30 and CD4-S31 SARS-CoV-2 epitope pools compared to the negative control (Fig. 2B;  $p = 0.0063$  and  $p = 0.0012$ , respectively, two-tailed Mann-Whitney). Significant CD4<sup>+</sup> T cell reactivity was also seen against the corresponding HCoV-R129 and HCoV-S124 pools of matching homologous peptides from other HCoVs (Fig. 2D;  $p < 0.0001$  and  $p < 0.0001$ , two-tailed Mann-Whitney). Detection of CD4<sup>+</sup> T cells with peptide pools selected on the basis of homology was consistent with the hypothesis that cross-reactive CD4<sup>+</sup> T cells between SARS-CoV-2 and other HCoVs exist in many individuals.

Reactivity against CD4-R30 and CD4-S31 (Fig. 2D;  $p = 0.0008$  and  $p = 0.0026$ , respectively), but not against HCoV-R129 and HCoV-S124, was increased in COVID-19 cases compared to unexposed individuals (Fig. 2C). Thus, pre-existing CD4<sup>+</sup> T cell reactivity to HCoV epitopes is modulated by COVID-19 and exposure to cross-reactive SARS-CoV-2 epitopes in COVID-19. These data from COVID-19 cases do not support the hypothesis that the HCoV exposure might induce an original antigenic sin phenomenon, impairing subsequent T cell responses to SARS-CoV-2 epitopes (28, 29), at least for COVID-19 cases of average disease severity.

Next, we examined the ex vivo memory phenotype of the T cells responding to the various epitope megapools. Results from one representative unexposed donor are shown in Fig. 3A. Responding cells in unexposed donors were predominantly found in the effector memory CD4<sup>+</sup> T cell population (CD45RA<sup>neg</sup>CCR7<sup>neg</sup>), followed by the central memory T cells (CD45RA<sup>neg</sup>CCR7<sup>pos</sup>) (30) (Fig. 3, A, B, and D). Comparable patterns of effector and central memory cells were observed among the antigen-specific CD4<sup>+</sup> T cells detected in the COVID-19 cases (Fig. 3, C and D). In conclusion, the CD4<sup>+</sup> T cells in unexposed donors that recognize SARS-CoV-2 epitopes, and epitopes from other HCoVs, have a memory phenotype. Overall, these data are consistent with the SARS-CoV-2-reactive CD4<sup>+</sup> T cells in unexposed subjects being HCoV-specific memory CD4<sup>+</sup> T cells with cross-reactivity to SARS-CoV-2.

### Identification of SARS-CoV-2 epitopes cross-reactive with other common HCoVs

The epitopes derived from the CD4-R30 and CD4-S31 pools



were used to generate short term T cell lines derived by stimulation of PBMCs from unexposed subjects. PBMCs were stimulated with an individual SARS-CoV-2 cognate epitope demonstrated to be recognized by T cells from that subject (Fig. 1 and table S1). Overall, T cell lines could be derived specific for a total of 42 SARS-CoV-2 epitopes.

These T cell lines were next tested for cross-reactivity against various coronavirus homologs, analogous to an approach previously successful in flavivirus studies (31). Cross-reactivity between SARS-CoV-2 epitope recognition and other HCoV epitope recognition was detected for 10/42 (24%) of the T cell lines (Fig. 4, A to J). Cross-reactivity was associated with epitopes derived from SARS-CoV-2 spike, N, nsp8, nsp12, and nsp13. In three cases, HCoV analogs were better antigens than the SARS-CoV-2 peptide, suggesting that they may be the cognate immunogen (Fig. 4, E, I, and J). One SARS-CoV-2 spike epitope was tested in two different donors with similar findings suggesting that HCoV cross-reactivity patterns are recurrent across individuals. Non-cross-reactive SARS-CoV-2 T cell lines are also shown (Fig. 4, K to L, and fig. S4). It is possible that cross-reactivity to these epitopes might be detected if T cell lines from additional individuals would be tested. In addition, these epitopes might be homologous to some other not yet unidentified viral sequence, or recognized by cognate naive T cells expanding in the in vitro culture (32). In addition, only 3/18 cases of strong response epitopes (defined in Fig. 1D) were cross-reactive, compared to 4/5 of weaker epitopes ( $p=0.02$ , Fisher's Exact test). To further demonstrate that the cross-reactive responses in unexposed donors are indeed derived from memory T cells, we stimulated purified memory and naïve CD4<sup>+</sup> T cells with the CD4-[S31] epitope pool. After 14 days, we detected responses to the CD4-[S31] peptide pool from cultures of memory CD4<sup>+</sup> T cells but not naïve CD4<sup>+</sup> T cells (fig. S8). In sum, these data demonstrate that memory CD4<sup>+</sup> T cells recognizing common cold coronaviruses including HCoV-OC43, HCoV-HKU1, HCoV-NL63, and HCoV-229E can exhibit substantial cross-reactivity to the homologous epitope in SARS-CoV-2.

Next we examined, for each SARS-CoV2:HCoV epitope pair, the degree of amino acid sequence homology and any relationship between homology and T cell cross-reactivity, considering different ranges of potentially relevant homology. Only 1% (1/99) of peptide pairs with 33-40% homology were cross-reactive. In the 47-60% epitope homology range, we observed cross-reactivity in 21% of cases (7/33). Strikingly, epitope homology  $\geq 67\%$  was associated with cross-reactivity in 57% of cases (21/37;  $p=0.0001$  or  $p=0.0033$  by two-tailed Fisher's Exact test, when compared against the 33-40% range epitopes or 47-60% range, respectively). A relationship was observed between epitope homology and CD4<sup>+</sup> T cell cross-reactivity. The data demonstrated that the arbitrary selection utilized as described for Fig. 1D, was indeed supported by the

experimental data. Thus,  $\sim 67\%$  amino acid homology appears to be a useful benchmark for consideration of potential cross-reactivity between class II epitopes. In summary, here we identified more than 140 human T cell epitopes derived from across the genome of SARS-CoV-2. We provide direct evidence that numerous CD4<sup>+</sup> T cells that react to SARS-CoV-2 epitopes actually cross-react with corresponding homologous sequences from any of multiple different commonly circulating HCoVs, and that these reactive cells are largely canonical memory CD4<sup>+</sup> T cells. These finding of cross-reactive HCoV T cell specificities are stark contrast to HCoV neutralizing antibodies, which are HCoV species-specific and did not show cross-reactivity against SARS-CoV-2 RBD (33-35). Based on these data, it is plausible to hypothesize that pre-existing cross-reactive HCoV CD4<sup>+</sup> T cell memory in some donors could be a contributing factor to variations in COVID-19 patient disease outcomes, but this is at present highly speculative (36).

## REFERENCES AND NOTES

1. E. Dong, H. Du, L. Gardner, An interactive web-based dashboard to track COVID-19 in real time. *Lancet Infect. Dis.* **20**, 533-534 (2020). [doi:10.1016/S1473-3099\(20\)30120-1](https://doi.org/10.1016/S1473-3099(20)30120-1) [Medline](#)
2. C. Huang, Y. Wang, X. Li, L. Ren, J. Zhao, Y. Hu, L. Zhang, G. Fan, J. Xu, X. Gu, Z. Cheng, T. Yu, J. Xia, Y. Wei, W. Wu, X. Xie, W. Yin, H. Li, M. Liu, Y. Xiao, H. Gao, L. Guo, J. Xie, G. Wang, R. Jiang, Z. Gao, Q. Jin, J. Wang, B. Cao, Clinical features of patients infected with 2019 novel coronavirus in Wuhan, China. *Lancet* **395**, 497-506 (2020). [doi:10.1016/S0140-6736\(20\)30183-5](https://doi.org/10.1016/S0140-6736(20)30183-5) [Medline](#)
3. N. Le Bert, A. T. Tan, K. Kunasegaran, C. Y. L. Tham, M. Hafezi, A. Chia, M. H. Y. Chng, M. Lin, N. Tan, M. Linster, W. N. Chia, M. I.-C. Chen, L.-F. Wang, E. E. Ooi, S. Kalimuddin, P. A. Tambyah, J. G.-H. Low, Y.-J. Tan, A. Bertoletti, SARS-CoV-2-specific T cell immunity in cases of COVID-19 and SARS, and uninfected controls. *Nature* (2020). [doi:10.1038/s41586-020-2550-z](https://doi.org/10.1038/s41586-020-2550-z) [Medline](#)
4. A. Grifoni, D. Weiskopf, S. I. Ramirez, J. Mateus, J. M. Dan, C. R. Moderbacher, S. A. Rawlings, A. Sutherland, L. Premkumar, R. S. Jadi, D. Marrama, A. M. de Silva, A. Frazier, A. F. Carlin, J. A. Greenbaum, B. Peters, F. Krammer, D. M. Smith, S. Crotty, A. Sette, Targets of T cell responses to SARS-CoV-2 coronavirus in humans with COVID-19 disease and unexposed individuals. *Cell* **181**, 1489-1501.e15 (2020). [doi:10.1016/j.cell.2020.05.015](https://doi.org/10.1016/j.cell.2020.05.015) [Medline](#)
5. B. J. Meckiff, C. Ramírez-Suástegui, V. Fajardo, S. J. Chee, A. Kusnadi, H. Simon, A. Grifoni, E. Pelosi, D. Weiskopf, A. Sette, F. Ay, G. Seumois, C. H. Ottensmeier, P. Vijayanand, Single-cell transcriptomic analysis of SARS-CoV-2 reactive CD4<sup>+</sup> T cells. *bioRxiv* 2020.06.12.148916 (2020). [Medline](#)
6. D. Weiskopf, K. S. Schmitz, M. P. Raadsen, A. Grifoni, N. M. A. Okba, H. Endeman, J. P. C. van den Akker, R. Molenkamp, M. P. G. Koopmans, E. C. M. van Gorp, B. L. Haagmans, R. L. de Swart, A. Sette, R. D. de Vries, Phenotype and kinetics of SARS-CoV-2-specific T cells in COVID-19 patients with acute respiratory distress syndrome. *Sci. Immunol.* **5**, eabd2071 (2020). [doi:10.1126/sciimmunol.abd2071](https://doi.org/10.1126/sciimmunol.abd2071) [Medline](#)
7. J. Braun, L. Loyal, M. Frentsch, D. Wendisch, P. Georg, F. Kurth, S. Hippenstiel, M. Dingeldey, B. Kruse, F. Fauchere, E. Baysal, M. Mangold, L. Henze, R. Lauster, M. Mall, K. Beyer, J. Roehmel, J. Schmitz, S. Miltenyi, M. A. Mueller, M. Witzenth, N. Suttrop, F. Kern, U. Reimer, H. Wenschuh, C. Drosten, V. M. Corman, C. Giesecke-Thiel, L.-E. Sander, A. Thiel, Presence of SARS-CoV-2 reactive T cells in COVID-19 patients and healthy donors. medRxiv 2020.2004.2017.20061440 [Preprint]. 22 April 2020; <https://doi.org/10.1101/2020.04.17.20061440>.
8. Y. Peng, A. J. Mentzer, G. Liu, X. Yao, Z. Yin, D. Dong, W. Dejnirattisai, T. Rostron, P. Supasa, C. Liu, C. Lopez-Camacho, J. Slon-Campos, Y. Zhao, D. Stuart, G. Paeson, J. Grimes, F. Antson, O. W. Bayfield, D. E. Hawkins, D. S. Ker, L. Turtle, K. Subramaniam, P. Thomson, P. Zhang, C. Dold, J. Ratcliff, P. Simmonds, T. de Silva, P. Sopp, D. Wellington, U. Rajapaksa, Y. L. Chen, M. Salio, G. Napolitani, W. Paes,

- P. Borrow, B. Kessler, J. W. Fry, N. F. Schwabe, M. G. Semple, K. J. Baillie, S. Moore, P. J. Openshaw, A. Ansari, S. Dunachie, E. Barnes, J. Frater, G. Kerr, P. Goulder, T. Lockett, R. Levin, R. J. Cornall, C. Conlon, P. Klenerman, A. McMichael, G. Screaton, J. Mongkolsapaya, J. C. Knight, G. Ogg, T. Dong, Broad and strong memory CD4<sup>+</sup> and CD8<sup>+</sup> T cells induced by SARS-CoV-2 in UK convalescent COVID-19 patients. *bioRxiv* 2020.06.05.134551 (2020). [Medline](#)
9. L. Kuri-Cervantes, M. B. Pampena, W. Meng, A. M. Rosenfeld, C. A. G. Ittner, A. R. Weisman, R. Agyekum, D. Mathew, A. E. Baxter, L. Vella, O. Kuthuru, S. Apostolidis, L. Bershaw, J. Dougherty, A. R. Greenplate, A. Pattekar, J. Kim, N. Han, S. Gouma, M. E. Weirick, C. P. Arevalo, M. J. Bolton, E. C. Goodwin, E. M. Anderson, S. E. Hensley, T. K. Jones, N. S. Mangalmurti, E. T. Luning Prak, E. J. Wherry, N. J. Meyer, M. R. Betts, Immunologic perturbations in severe COVID-19/SARS-CoV-2 infection. *bioRxiv* 2020.05.18.101717 (2020). [Medline](#)
10. I. Thevarajan, T. H. O. Nguyen, M. Koutsakos, J. Druce, L. Caly, C. E. van de Sandt, X. Jia, S. Nicholson, M. Catton, B. Cowie, S. Y. C. Tong, S. R. Lewin, K. Kedzierska, Breadth of concomitant immune responses prior to patient recovery: A case report of non-severe COVID-19. *Nat. Med.* **26**, 453–455 (2020). [doi:10.1038/s41591-020-0819-2](#) [Medline](#)
11. L. Rodriguez, P. Pekkarinen, L. Kanth Tadepally, Z. Tan, C. Rosat Consiglio, C. Pou, Y. Chen, C. Habimana Mugabo, A. Nguyen Quoc, K. Nowlan, T. Strandin, L. Levanov, J. Mikes, J. Wang, A. Kantele, J. Hepojoki, O. Vapalahti, S. Heinonen, E. Kekalainen, P. Brodin, Systems-level immunomonitoring from acute to recovery phase of severe COVID-19. medRxiv 2020.2006.2003.20121582 [Preprint]. 7 June 2020; <https://doi.org/10.1101/2020.06.03.20121582>
12. J. Liu, S. Li, J. Liu, B. Liang, X. Wang, H. Wang, W. Li, Q. Tong, J. Yi, L. Zhao, L. Xiong, C. Guo, J. Tian, J. Luo, J. Yao, R. Pang, H. Shen, C. Peng, T. Liu, Q. Zhang, J. Wu, L. Xu, S. Lu, B. Wang, Z. Weng, C. Han, H. Zhu, R. Zhou, H. Zhou, X. Chen, P. Ye, B. Zhu, L. Wang, W. Zhou, S. He, Y. He, S. Jie, P. Wei, J. Zhang, Y. Lu, W. Wang, L. Zhang, L. Li, F. Zhou, J. Wang, U. Dittmer, M. Lu, Y. Hu, D. Yang, X. Zheng, Longitudinal characteristics of lymphocyte responses and cytokine profiles in the peripheral blood of SARS-CoV-2 infected patients. *EBioMedicine* **55**, 102763 (2020). [doi:10.1016/j.ebiom.2020.102763](#) [Medline](#)
13. D. Mathew, J. R. Giles, A. E. Baxter, D. A. Oldridge, A. R. Greenplate, J. E. Wu, C. Alanio, L. Kuri-Cervantes, M. B. Pampena, K. D'Andrea, S. Manne, Z. Chen, Y. J. Huang, J. P. Reilly, A. R. Weisman, C. A. G. Ittner, O. Kuthuru, J. Dougherty, K. Nzingha, N. Han, J. Kim, A. Pattekar, E. C. Goodwin, E. M. Anderson, M. E. Weirick, S. Gouma, C. P. Arevalo, M. J. Bolton, F. Chen, S. F. Lacey, H. Ramage, S. Cherry, S. E. Hensley, S. A. Apostolidis, A. C. Huang, L. A. Vella, M. R. Betts, N. J. Meyer, E. J. Wherry; UPenn COVID Processing Unit, Deep immune profiling of COVID-19 patients reveals distinct immunotypes with therapeutic implications. *Science* eabc8511 (2020). [doi:10.1126/science.abc8511](#) [Medline](#)
14. M. E. Killerby, H. M. Biggs, A. Haynes, R. M. Dahl, D. Mustaquim, S. I. Gerber, J. T. Watson, Human coronavirus circulation in the United States 2014–2017. *J. Clin. Virol.* **101**, 52–56 (2018). [doi:10.1016/j.jcv.2018.01.019](#) [Medline](#)
15. G. J. Gorse, G. B. Patel, J. N. Vitale, T. Z. O'Connor, Prevalence of antibodies to four human coronaviruses is lower in nasal secretions than in serum. *Clin. Vaccine Immunol.* **17**, 1875–1880 (2010). [doi:10.1128/CVI.00278-10](#) [Medline](#)
16. E. E. Walsh, J. H. Shin, A. R. Falsey, Clinical impact of human coronaviruses 229E and OC43 infection in diverse adult populations. *J. Infect. Dis.* **208**, 1634–1642 (2013). [doi:10.1093/infdis/jit393](#) [Medline](#)
17. S. Nickbakhsh, A. Ho, D. F. P. Marques, J. McMenamin, R. N. Gunson, P. R. Murcia, Epidemiology of seasonal coronaviruses: Establishing the context for the emergence of coronavirus disease 2019. *J. Infect. Dis.* **222**, 17–25 (2020). [doi:10.1093/infdis/jiaa185](#) [Medline](#)
18. S. M. Kissler, C. Tedijanto, E. Goldstein, Y. H. Grad, M. Lipsitch, Projecting the transmission dynamics of SARS-CoV-2 through the postpandemic period. *Science* **368**, 860–868 (2020). [doi:10.1126/science.abb5793](#) [Medline](#)
19. D. Weiskopf, M. A. Angelo, A. Grifoni, P. H. O'Rourke, J. Sidney, S. Paul, A. D. De Silva, E. Phillips, S. Mallal, S. Premawansa, G. Premawansa, A. Wijewickrama, B. Peters, A. Sette, HLA-DRB1 alleles are associated with different magnitudes of dengue virus-specific CD4<sup>+</sup> T-cell responses. *J. Infect. Dis.* **214**, 1117–1124 (2016). [doi:10.1093/infdis/jiv309](#) [Medline](#)
20. C. Oseroff, J. Sidney, M. F. Kotturi, R. Kolla, R. Alam, D. H. Broide, S. I. Wasserman, D. Weiskopf, D. M. McKinney, J. L. Chung, A. Petersen, H. Grey, B. Peters, A. Sette, Molecular determinants of T cell epitope recognition to the common Timothy grass allergen. *J. Immunol.* **185**, 943–955 (2010). [doi:10.4049/jimmunol.1000405](#) [Medline](#)
21. D. Weiskopf, C. Cerpas, M. A. Angelo, D. J. Bangs, J. Sidney, S. Paul, B. Peters, F. P. Sanches, C. G. T. Silvera, P. R. Costa, E. G. Kallas, L. Gresh, A. D. de Silva, A. Balmaseda, E. Harris, A. Sette, Human CD8<sup>+</sup> T cell responses against the 4 Dengue virus serotypes are associated with distinct patterns of protein targets. *J. Infect. Dis.* **212**, 1743–1751 (2015). [doi:10.1093/infdis/jiv289](#) [Medline](#)
22. H. Voic, R. D. de Vries, J. Sidney, P. Rubiro, E. Moore, E. J. Phillips, S. Mallal, B. Schwan, D. Weiskopf, A. Grifoni, A. Sette, Identification and characterization of CD4<sup>+</sup> T cell epitopes after Shingrix vaccination. *bioRxiv* 2020/227082 [Preprint]. 29 July 2020; <https://doi.org/10.1101/2020.07.29.227082>
23. D. R. Madden, The three-dimensional structure of peptide-MHC complexes. *Annu. Rev. Immunol.* **13**, 587–622 (1995). [doi:10.1146/annurev.iv.13.040195.003103](#) [Medline](#)
24. R. T. Carson, K. M. Vignali, D. L. Woodland, D. A. Vignali, T cell receptor recognition of MHC class II-bound peptide flanking residues enhances immunogenicity and results in altered TCR V region usage. *Immunity* **7**, 387–399 (1997). [doi:10.1016/S1074-7613\(00\)80360-X](#) [Medline](#)
25. J. M. Dan, C. S. Lindestam Arlehamn, D. Weiskopf, R. da Silva Antunes, C. Havernar-Daughton, S. M. Reiss, M. Brigger, M. Bothwell, A. Sette, S. Crotty, A cytokine-independent approach to identify antigen-specific human germinal center T follicular helper cells and rare antigen-specific CD4<sup>+</sup> T cells in blood. *J. Immunol.* **197**, 983–993 (2016). [doi:10.4049/jimmunol.1600318](#) [Medline](#)
26. C. Havernar-Daughton, S. M. Reiss, D. G. Carnathan, J. E. Wu, K. Kendric, A. Torrents de la Peña, S. P. Kasturi, J. M. Dan, M. Bothwell, R. W. Sanders, B. Pulendran, G. Silvestri, S. Crotty, Cytokine-independent detection of antigen-specific germinal center T follicular helper cells in immunized nonhuman primates using a live cell activation-induced marker technique. *J. Immunol.* **197**, 994–1002 (2016). [doi:10.4049/jimmunol.1600320](#) [Medline](#)
27. S. Reiss, A. E. Baxter, K. M. Cirelli, J. M. Dan, A. Morou, A. Daigneault, N. Brassard, G. Silvestri, J.-P. Routy, C. Havernar-Daughton, S. Crotty, D. E. Kaufmann, Comparative analysis of activation induced marker (AIM) assays for sensitive identification of antigen-specific CD4 T cells. *PLOS ONE* **12**, e0186998 (2017). [doi:10.1371/journal.pone.0186998](#) [Medline](#)
28. A. Vatti, D. M. Monsalve, Y. Pacheco, C. Chang, J.-M. Anaya, M. E. Gershwin, Original antigenic sin: A comprehensive review. *J. Autoimmun.* **83**, 12–21 (2017). [doi:10.1016/j.jaut.2017.04.008](#) [Medline](#)
29. K. Kadkhoda, COVID-19: An immunopathological view. *MSphere* **5**, e00344-20 (2020). [doi:10.1128/mSphere.00344-20](#) [Medline](#)
30. F. Sallusto, A. Langenkamp, J. Geginat, A. Lanzavecchia, Functional subsets of memory T cells identified by CCR7 expression. *Curr. Top. Microbiol. Immunol.* **251**, 167–171 (2000). [doi:10.1007/978-3-642-57276-0\\_21](#) [Medline](#)
31. A. Grifoni, H. Voic, S. K. Dhanda, C. K. Kidd, J. D. Brien, S. Buus, A. Stryhn, A. P. Durbin, S. Whitehead, S. A. Diehl, A. D. De Silva, A. Balmaseda, E. Harris, D. Weiskopf, A. Sette, T cell responses induced by attenuated flavivirus vaccination are specific and show limited cross-reactivity with other flavivirus species. *J. Virol.* **94**, e00089-20 (2020). [doi:10.1128/JVI.00089-20](#) [Medline](#)
32. E. J. Hensen, B. G. Elferink, Primary sensitisation and restimulation of human lymphocytes with soluble antigen in vitro. *Nature* **277**, 223–225 (1979). [doi:10.1038/277223a0](#) [Medline](#)
33. L. Premkumar, B. Segovia-Chumbez, R. Jadi, D. R. Martinez, R. Raut, A. Markmann, C. Cornaby, L. Bartelt, S. Weiss, Y. Park, C. E. Edwards, E. Weimer, E. M. Scherer, N. Roupheal, S. Edupuganti, D. Weiskopf, L. V. Tse, Y. J. Hou, D. Margolis, A. Sette, M. H. Collins, J. Schmitz, R. S. Baric, A. M. de Silva, The receptor binding domain of the viral spike protein is an immunodominant and highly specific target of antibodies in SARS-CoV-2 patients. *Sci. Immunol.* **5**, eabc8413 (2020). [doi:10.1126/sciimmunol.abc8413](#) [Medline](#)
34. M. Yuan, N. C. Wu, X. Zhu, C. D. Lee, R. T. Y. So, H. Lv, C. K. P. Mok, I. A. Wilson, A highly conserved cryptic epitope in the receptor binding domains of SARS-CoV-2 and SARS-CoV. *Science* **368**, 630–633 (2020). [doi:10.1126/science.abb7269](#) [Medline](#)
35. A. Z. Wec, D. Wrapp, A. S. Herbert, D. P. Maurer, D. Haslwanter, M. Sakharkar, R. K. Jangra, M. E. Dieterle, A. Lilov, D. Huang, L. V. Tse, N. V. Johnson, C.-L. Hsieh, N. Wang, J. H. Nett, E. Champney, I. Burnina, M. Brown, S. Lin, M. Sinclair, C. Johnson, S. Pudi, R. Bortz 3rd, A. S. Wirchnianski, E. Lauderilch, C. Florez, J. M.

- Fels, C. M. O'Brien, B. S. Graham, D. Nemazee, D. R. Burton, R. S. Baric, J. E. Voss, K. Chandran, J. M. Dye, J. S. McLellan, L. M. Walker. Broad neutralization of SARS-related viruses by human monoclonal antibodies. *Science* eabc7424 (2020). [doi:10.1126/science.abc7424](https://doi.org/10.1126/science.abc7424) [Medline](#)
36. A. Sette, S. Crotty. Pre-existing immunity to SARS-CoV-2: The knowns and unknowns. *Nat. Rev. Immunol.* **20**, 457–458 (2020). [doi:10.1038/s41577-020-0389-z](https://doi.org/10.1038/s41577-020-0389-z) [Medline](#)
37. A. Grifoni, J. Sidney, Y. Zhang, R. H. Scheuermann, B. Peters, A. Sette. Candidate targets for immune responses to 2019-Novel Coronavirus (nCoV): Sequence homology- and bioinformatic-based predictions. *bioRxiv* 2020.02.12.946087 [Preprint]. 16 March 2020; <https://doi.org/10.1101/2020.02.12.946087>
38. F. Amanat, D. Stadlbauer, S. Strohmaier, T. H. O. Nguyen, V. Chromikova, M. McMahon, K. Jiang, G. A. Arunkumar, D. Jurczynski, J. Polanco, M. Bermudez-Gonzalez, G. Kleiner, T. Aydllo, L. Miorin, D. S. Fierer, L. A. Lugo, E. M. Kojic, J. Stoeber, S. T. H. Liu, C. Cunningham-Rundles, P. L. Felgner, T. Moran, A. Garcia-Sastre, D. Caplviski, A. C. Cheng, K. Kedzierska, O. Vapalahti, J. M. Hepojoki, V. Simon, F. Krammer, A serological assay to detect SARS-CoV-2 seroconversion in humans. *Nat. Med.* **26**, 1033–1036 (2020). [doi:10.1038/s41591-020-0913-5](https://doi.org/10.1038/s41591-020-0913-5) [Medline](#)
39. J. Greenbaum, J. Sidney, J. Chung, C. Brander, B. Peters, A. Sette. Functional classification of class II human leukocyte antigen (HLA) molecules reveals seven different supertypes and a surprising degree of repertoire sharing across supertypes. *Immunogenetics* **63**, 325–335 (2011). [doi:10.1007/s00251-011-0513-0](https://doi.org/10.1007/s00251-011-0513-0) [Medline](#)
40. S. Carrasco Pro, J. Sidney, S. Paul, C. Lindestam Arlehamn, D. Weiskopf, B. Peters, A. Sette. Automatic generation of validated specific epitope sets. *J. Immunol. Res.* **2015**, 763461 (2015). [doi:10.1155/2015/763461](https://doi.org/10.1155/2015/763461) [Medline](#)
41. D. Hinz, G. Seumois, A. M. Gholami, J. A. Greenbaum, J. Lane, B. White, D. H. Broide, V. Schulten, J. Sidney, P. Bakhr, C. Oseroff, E. Wambre, E. A. James, W. W. Kwok, B. Peters, P. Vijayanand, A. Sette. Lack of allergy to timothy grass pollen is not a passive phenomenon but associated with the allergen-specific modulation of immune reactivity. *Clin. Exp. Allergy* **46**, 705–719 (2016). [doi:10.1111/cea.12692](https://doi.org/10.1111/cea.12692) [Medline](#)
42. C. S. Lindestam Arlehamn, D. M. McKinney, C. Carpenter, S. Paul, V. Rozot, E. Makgutho, Y. Gregg, M. van Rooyen, J. D. Ernst, M. Hatherill, W. A. Hanekom, B. Peters, T. J. Scriba, A. Sette. A quantitative analysis of complexity of human pathogen-specific CD4 T cell responses in healthy *M. tuberculosis* infected South Africans. *PLOS Pathog.* **12**, e1005760 (2016). [doi:10.1371/journal.ppat.1005760](https://doi.org/10.1371/journal.ppat.1005760) [Medline](#)
43. T. Bancroft, M. B. C. Dillon, R. da Silva Antunes, S. Paul, B. Peters, S. Crotty, C. S. Lindestam Arlehamn, A. Sette. Th1 versus Th2 T cell polarization by whole-cell and acellular childhood pertussis vaccines persists upon re-immunization in adolescence and adulthood. *Cell. Immunol.* **304-305**, 35–43 (2016). [doi:10.1016/j.cellimm.2016.05.002](https://doi.org/10.1016/j.cellimm.2016.05.002) [Medline](#)
44. R. da Silva Antunes, S. Paul, J. Sidney, D. Weiskopf, J. M. Dan, E. Phillips, S. Mallal, S. Crotty, A. Sette, C. S. Lindestam Arlehamn. Definition of human epitopes recognized in tetanus toxoid and development of an assay strategy to detect ex vivo tetanus CD4+ T cell responses. *PLOS ONE* **12**, e0169086 (2017). [doi:10.1371/journal.pone.0169086](https://doi.org/10.1371/journal.pone.0169086) [Medline](#)
45. A. Elong Ngono, H.-W. Chen, W. W. Tang, Y. Joo, K. King, D. Weiskopf, J. Sidney, A. Sette, S. Shresta. Protective role of cross-reactive CD8 T cells against Dengue virus infection. *EBioMedicine* **13**, 284–293 (2016). [doi:10.1016/j.ebiom.2016.10.006](https://doi.org/10.1016/j.ebiom.2016.10.006) [Medline](#)
46. A. Grifoni, M. A. Angelo, B. Lopez, P. H. O'Rourke, J. Sidney, C. Cerpas, A. Balmaseda, C. G. T. Silveira, A. Maestri, P. R. Costa, A. P. Durbin, S. A. Diehl, E. Phillips, S. Mallal, A. D. De Silva, G. Nchinda, C. Nkenfou, M. H. Collins, A. M. de Silva, M. Q. Lim, P. A. Macary, F. Tatullo, T. Solomon, V. Satchidanandam, A. Desai, V. Ravi, J. Coloma, L. Turtle, L. Rivino, E. G. Kallas, B. Peters, E. Harris, A. Sette, D. Weiskopf. Global assessment of Dengue virus-specific CD4+ T cell responses in Dengue-endemic areas. *Front. Immunol.* **8**, 1309 (2017). [doi:10.3389/fimmu.2017.01309](https://doi.org/10.3389/fimmu.2017.01309) [Medline](#)
47. D. Hinz, C. Oseroff, J. Pham, J. Sidney, B. Peters, A. Sette. Definition of a pool of epitopes that recapitulates the T cell reactivity against major house dust mite allergens. *Clin. Exp. Allergy* **45**, 1601–1612 (2015). [doi:10.1111/cea.12507](https://doi.org/10.1111/cea.12507) [Medline](#)

## ACKNOWLEDGMENTS

We would like to thank the Flow Cytometry Core Facility at the La Jolla Institute for Immunology for the technical assistance provided during FACS experiments. **Funding:** This work was funded by the NIH NIAID under awards AI42742 (Cooperative Centers for Human Immunology) (S.C. and A.S.), National Institutes of Health contract Nr. 75N9301900065 (A.S. and D.W.), and U19 AI118626 (A.S. and B.P.). This work was additionally supported by the NIAID under K08 award AI135078 (J.D.), UCSD T32s AI007036 and AI007384 Infectious Diseases Division (S.Ram., S.Raw.) and the John and Mary Tu Foundation (D.S.). **Author contributions:** Conceptualization: D.W., S.C., and A.S.; Investigation, J.M. A.G., A.T, J.S, E.P, S.M, M.L, P.R, L.Q., A.S., E.Y, R.A.S, A.M, L.P and D.W.; Formal Analysis, J.M. A.G., D.W, J.M.D, A.M, L.P and S.C.; Resources, S.I.R., Z.C.B. S.A.R., D.M.S., S.C., and A.S.; Data Curation and Bioinformatic analysis, J.A.G. and B.P.; Writing, S.C., A.S., and D.W.; Supervision, B.P., A.M.d.S., S.C., A.S and D.W.; Project Administration, A.F.; Funding Acquisition, S.C., A.S., D.W., S.R., and J.D. **Competing interests:** A.S and S.C. are inventors on patent application no. 63/012,902, submitted by La Jolla Institute for Immunology, that covers the use of the megapools and peptides thereof for therapeutic and diagnostic purposes. A.S. is a consultant for Gritstone and Flow Pharma. A.S. and S.C. are consultants for Avalia. All other authors declare no conflict of interest. **Data and materials availability:** All datasets generated for this study are included in the supplementary materials. All the epitopes identified in this study have been submitted to immune epitope database (<http://www.iedb.org/submit/1000855>). Epitope pools utilized in this paper will be made available to the scientific community upon request and execution of a material transfer agreement (MTA) directed to D.W. This work is licensed under a Creative Commons Attribution 4.0 International (CC BY 4.0) license, which permits unrestricted use, distribution, and reproduction in any medium, provided the original work is properly cited. To view a copy of this license, visit <https://creativecommons.org/licenses/by/4.0/>. This license does not apply to figures/photos/artwork or other content included in the article that is credited to a third party; obtain authorization from the rights holder before using such material.

## SUPPLEMENTARY MATERIALS

[science.sciencemag.org/cgi/content/full/science.abd3871/DC1](https://science.sciencemag.org/cgi/content/full/science.abd3871/DC1)

Materials and Methods

Figs. S1 to S8

Tables S1 to S8

References (31–47)

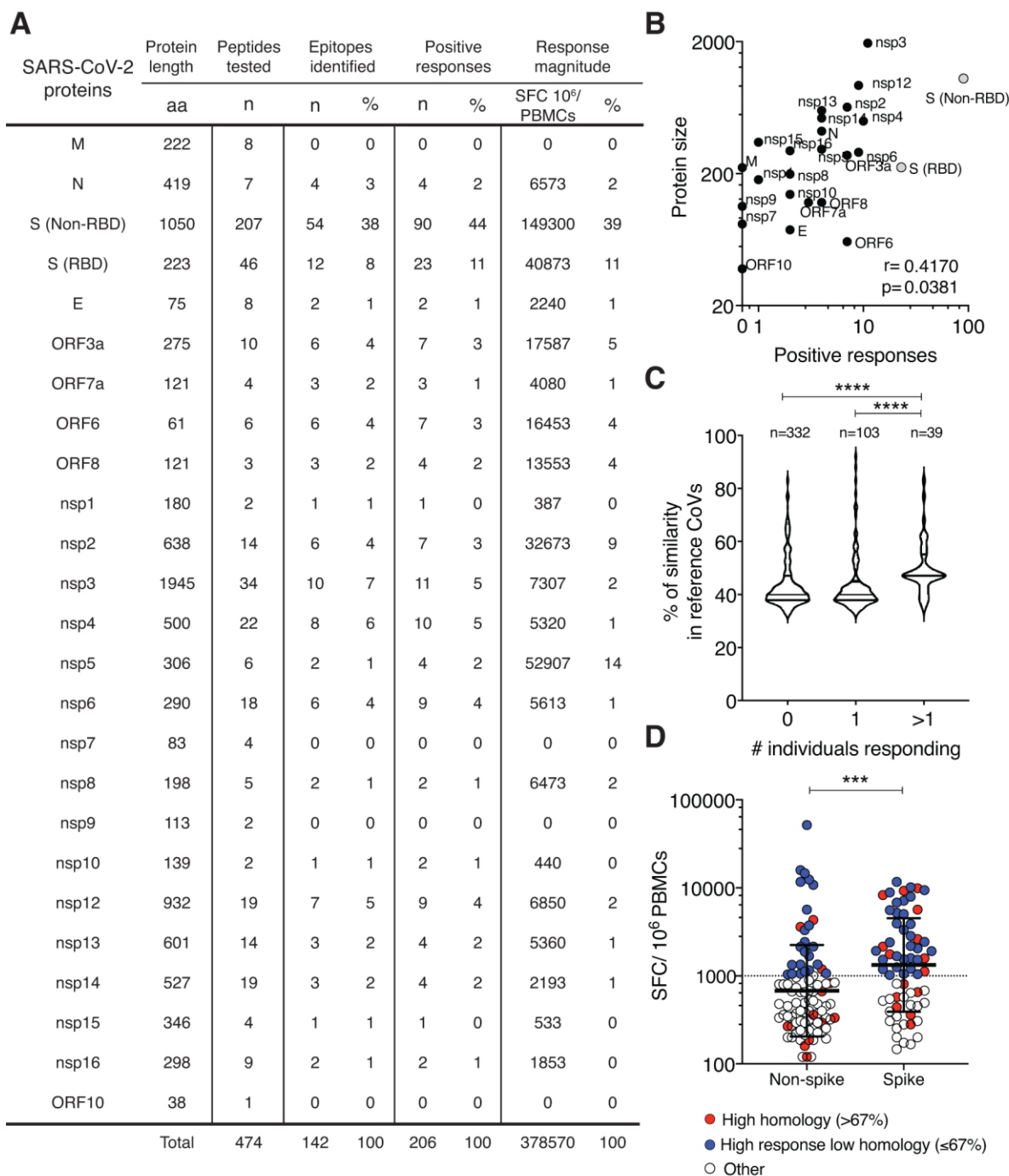
MDAR Reproducibility Checklist

25 June 2020; accepted 30 July 2020

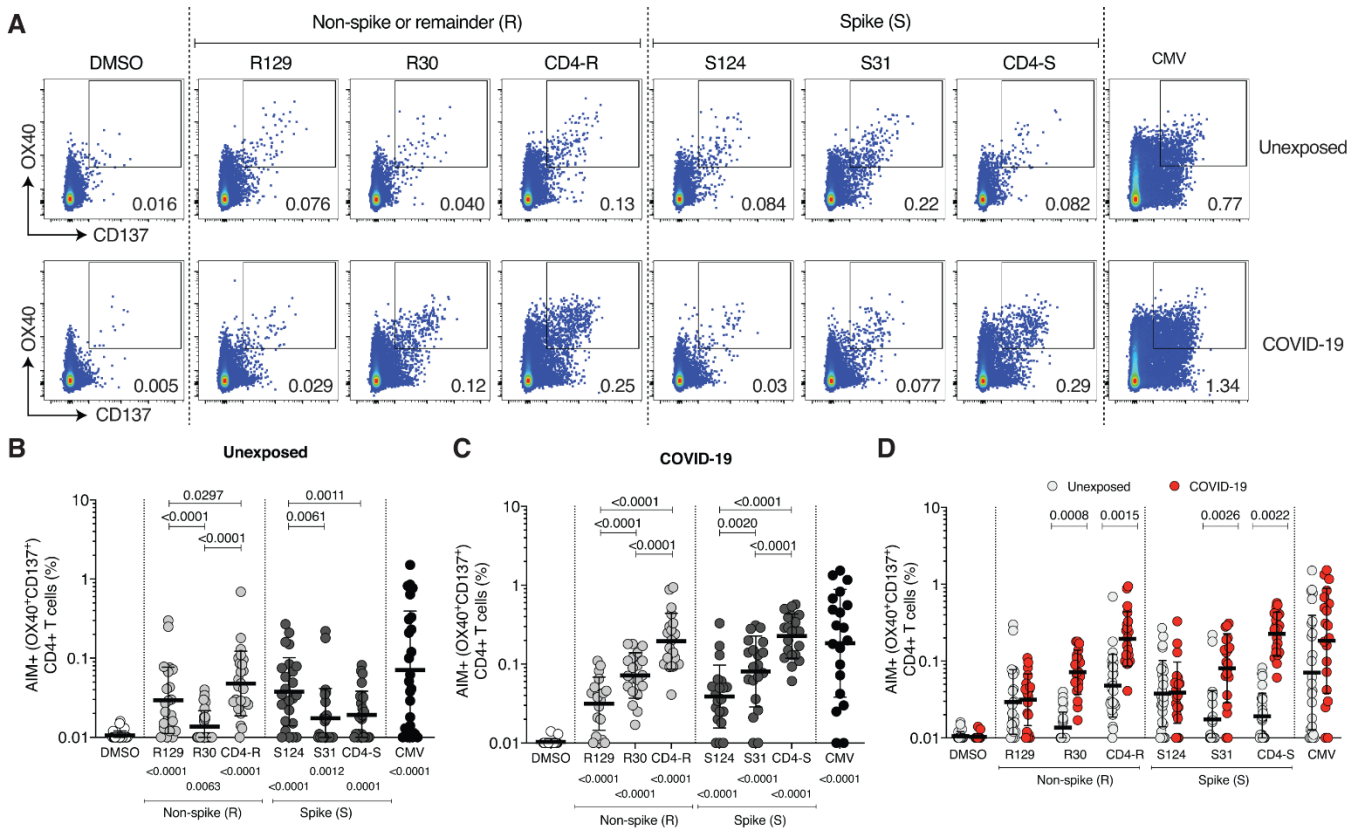
Published online 4 August 2020

10.1126/science.abd3871



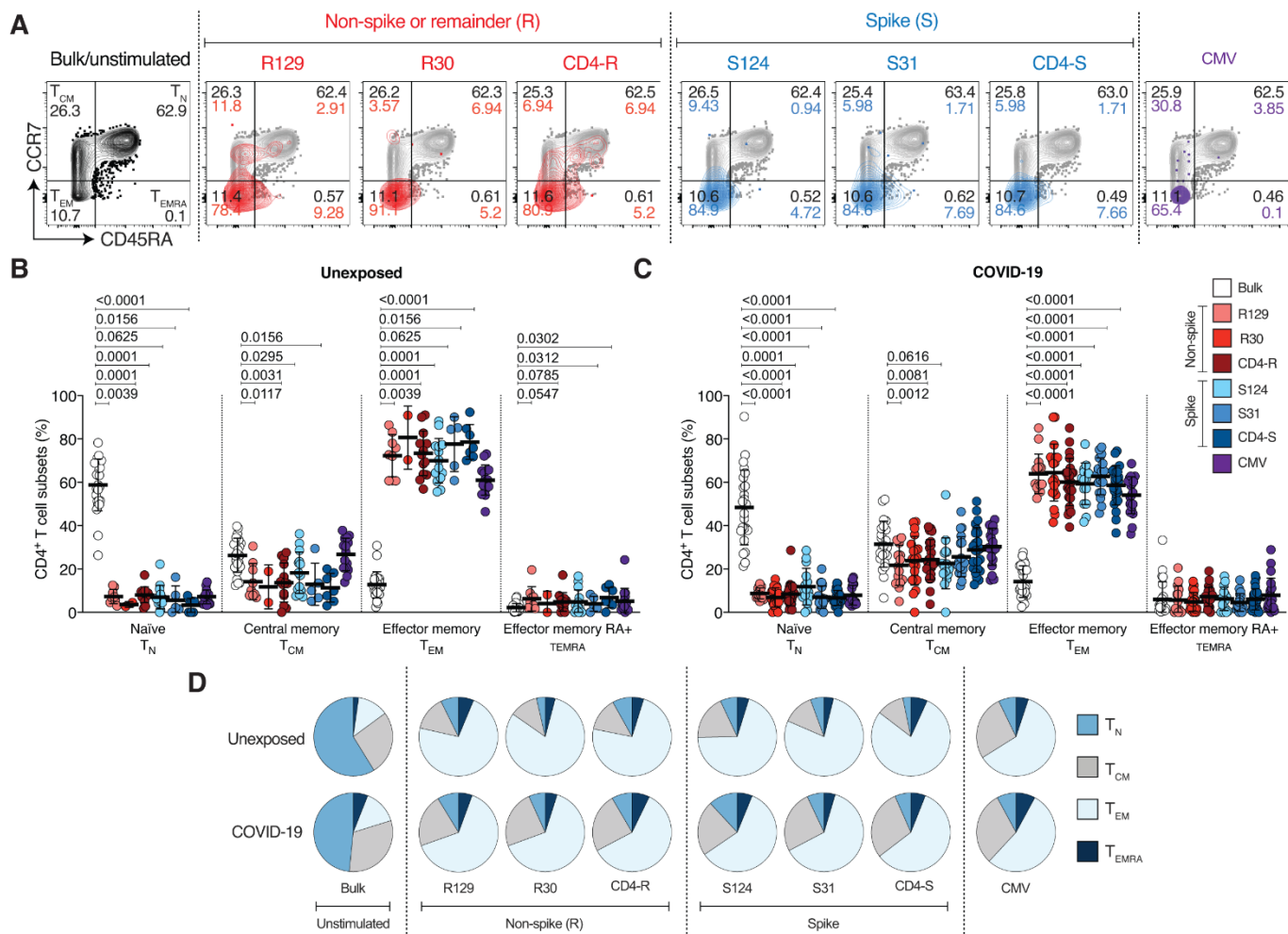


**Fig. 1. Characteristics of SARS-CoV-2 epitopes identified in unexposed donors.** Reactivity was determined by FluoroSPOT assay after 17 days of in vitro stimulation of unexposed donor PBMCs ( $n=18$ ) with one pool of peptides spanning the entire sequence of the spike protein (CD4-S), or a non-spike “megapool” (CD4-R) of predicted epitopes from the non-spike (i.e., “remainder”) regions of the viral genome. (A) Summary of the responses as a function of the protein of origin. (B) Spearman correlation of positive responses per SARS-CoV-2 protein size. (C) Percent similarity of the identified epitopes with common cold coronavirus peptides as a function of the number of responding donors. (D) Each dot shows the reactivity of a donor/epitope combination derived from either non-spike (CD4-R) or spike (CD4-S). Black bars indicate the geometric mean and geometric SD. Red indicates donor/epitope combinations with sequence identity >67% with common cold coronaviruses, while blue indicates highly reactive donor/epitopes combinations (>1000 SFC $\times 10^6$ ) with sequence identity  $\leq 67\%$ . In (C) and (D), statistical comparisons are performed by two-tail Mann-Whitney test. \*\*\*  $p < 0.001$ , \*\*\*\*  $p < 0.0001$ .

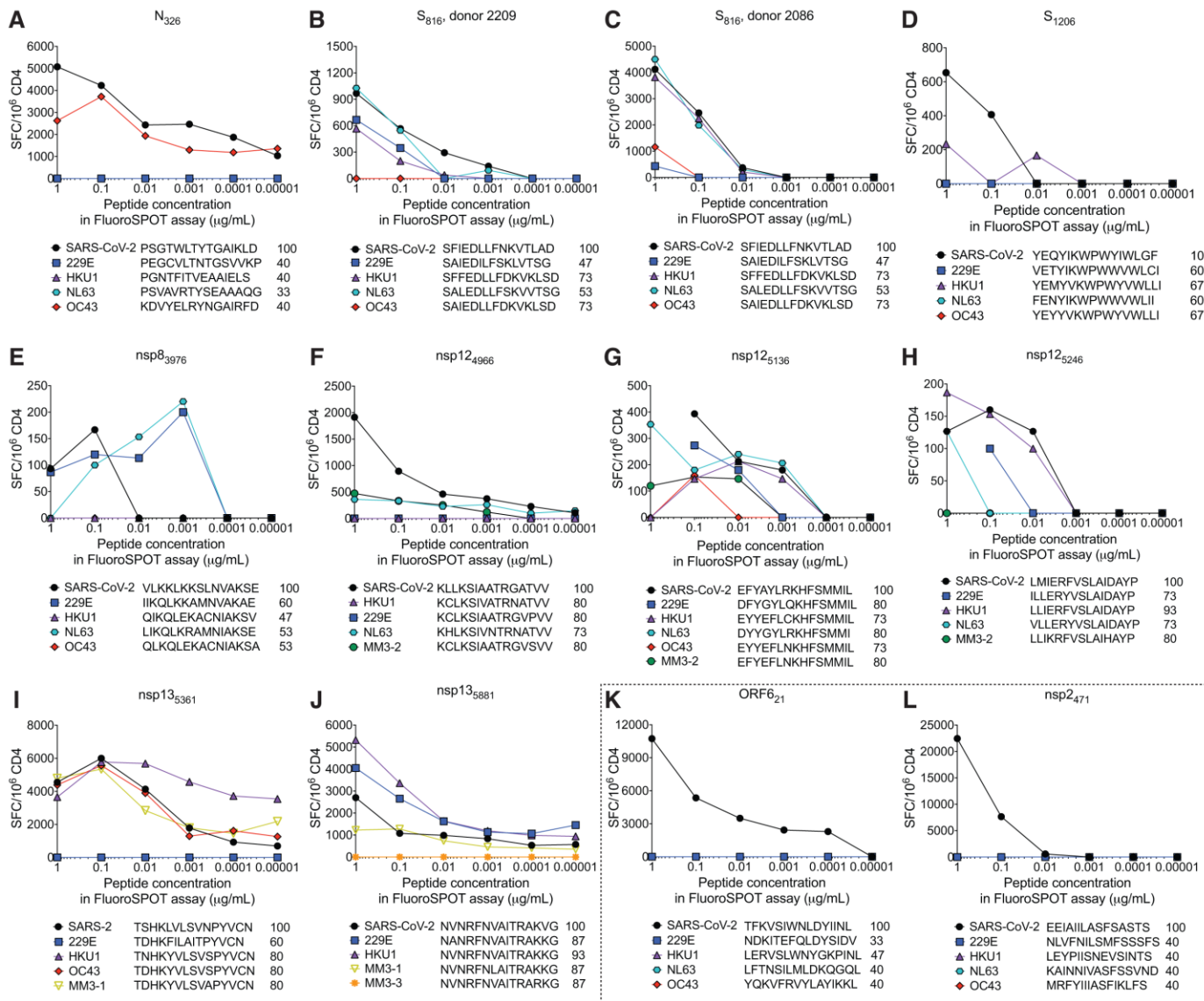


**Fig. 2. CD4<sup>+</sup> T cells in SARS-CoV-2-unexposed and COVID-19 individuals against HCoV epitopes homologous to SARS-CoV-2 epitopes.** (A) Example of flow cytometry gating strategy for antigen-specific CD4<sup>+</sup> T cells based on AIM (OX40<sup>+</sup> and CD137<sup>+</sup> double expression) after stimulation of PBMCs with HCoV or SARS-CoV-2 peptides. (B to D) Antigen-specific CD4<sup>+</sup> T cells measured as a percentage of AIM<sup>+</sup> (OX40<sup>+</sup>CD137<sup>+</sup>) CD4<sup>+</sup> T cells after stimulation of PBMCs with HCoV epitopes homologous to SARS-CoV-2 epitopes. Samples were derived from SARS-CoV-2-unexposed donors (unexposed, n = 25) and recovered COVID-19 patients (COVID-19, n = 20). Black bars indicate the geometric mean and geometric SD. Each dot is representative of an individual subject. Statistical pairwise comparisons [(B) and (C)] were performed with the Wilcoxon test. P-values related to comparisons to the DMSO controls are listed at the bottom of the graphs, while any significant p-values related to inter-group comparisons are listed on top of the graphs. Statistical comparisons across cohorts were performed with the Mann-Whitney test (D). See also figs. S5 and S6.





**Fig. 3. Phenotypes of antigen-specific CD4<sup>+</sup> T cells from SARS-CoV-2-unexposed and COVID-19 responding to HCoV epitopes homologous to SARS-CoV-2 epitopes. (A)** Example of flow cytometry gating strategy for antigen-specific CD4<sup>+</sup> T cell subsets after overnight stimulation of PBMCs with HCoV or SARS-CoV-2 peptides *ex vivo*. **(B and C)** Phenotype of antigen-specific CD4<sup>+</sup> T cells (OX40<sup>+</sup>CD137<sup>+</sup>) responding to indicated pools of SARS-CoV-2 and HCoV epitopes in unexposed and recovered COVID-19 patients. Data are shown as mean  $\pm$  SD. Each dot represents an individual subject. Statistical pairwise comparisons in (B) and (C) were performed with the Wilcoxon test. **(D)** Overall averages of antigen-specific CD4<sup>+</sup> T cell subsets detected in unexposed and COVID-19 subjects. See also fig. S5.



**Fig. 4. Cross-reactivity of SARS-CoV-2 and homologous HCoV peptides.** Twelve short-term cell lines were generated using specific SARS-CoV-2 epitope/donor combinations selected on the basis of the primary screen. After 14 days of in vitro expansion, each T cell line was tested with the SARS-CoV-2 epitope used for stimulation and peptides corresponding to analogous sequences from other HCoVs at six different concentrations (1µg/mL, 0.1µg/mL, 0.01µg/mL, 0.001µg/mL, 0.0001µg/mL, 0.00001µg/mL). Spot forming cells per million (SFC/10<sup>6</sup>) PBMCs are plotted for T cell lines stimulated with each peptide. See also fig. S7.

## Selective and cross-reactive SARS-CoV-2 T cell epitopes in unexposed humans

Jose Mateus, Alba Grifoni, Alison Tarke, John Sidney, Sydney I. Ramirez, Jennifer M. Dan, Zoe C. Burger, Stephen A. Rawlings, Davey M. Smith, Elizabeth Phillips, Simon Mallal, Marshall Lammers, Paul Rubiro, Lorenzo Quiambao, Aaron Sutherland, Esther Dawen Yu, Ricardo da Silva Antunes, Jason Greenbaum, April Frazier, Alena J. Markmann, Lakshmanane Premkumar, Aravinda de Silva, Bjoern Peters, Shane Crotty, Alessandro Sette and Daniela Weiskopf

published online August 4, 2020 originally published online August 4, 2020

### ARTICLE TOOLS

<http://science.sciencemag.org/content/early/2020/08/04/science.abd3871>

### SUPPLEMENTARY MATERIALS

<http://science.sciencemag.org/content/suppl/2020/08/03/science.abd3871.DC1>

### RELATED CONTENT

<http://stm.sciencemag.org/content/scitransmed/early/2020/08/03/scitranslmed.abc5332.full>  
<http://stm.sciencemag.org/content/scitransmed/early/2020/07/27/scitranslmed.abc7075.full>  
<http://stm.sciencemag.org/content/scitransmed/12/555/eabc9396.full>  
<http://stm.sciencemag.org/content/scitransmed/12/554/eabc1126.full>

### REFERENCES

This article cites 47 articles, 16 of which you can access for free  
<http://science.sciencemag.org/content/early/2020/08/04/science.abd3871#BIBL>

### PERMISSIONS

<http://www.sciencemag.org/help/reprints-and-permissions>

Use of this article is subject to the [Terms of Service](#)

---

*Science* (print ISSN 0036-8075; online ISSN 1095-9203) is published by the American Association for the Advancement of Science, 1200 New York Avenue NW, Washington, DC 20005. The title *Science* is a registered trademark of AAAS.

Copyright © 2020 The Authors, some rights reserved; exclusive licensee American Association for the Advancement of Science. No claim to original U.S. Government Works. Distributed under a Creative Commons Attribution License 4.0 (CC BY).